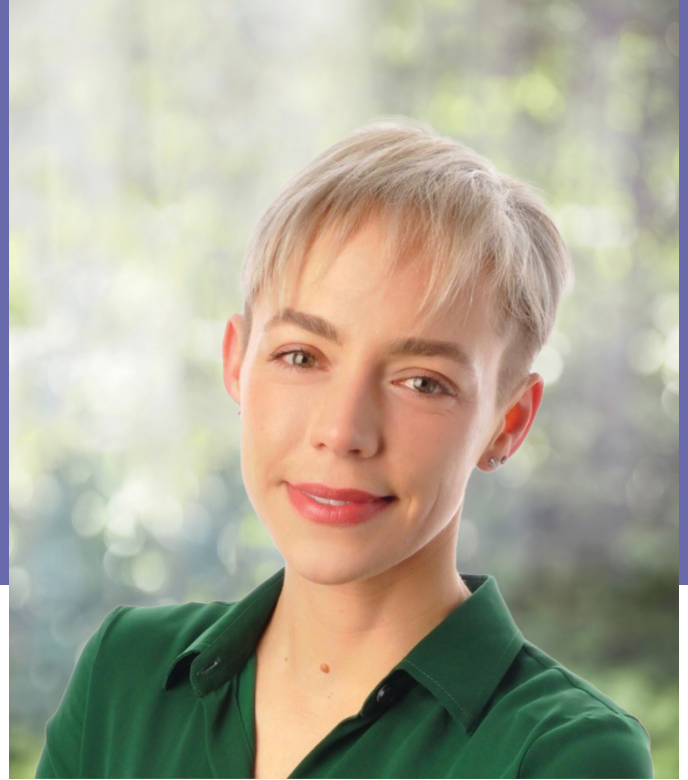




**Adeney**  
PRIVATE HOSPITAL

# Doctor Profile

## Gastroenterology



### **Dr Tess McClure**

**MBBS, BMedSci(Hons), FRACP**

Dr Tess McClure is a Consultant Gastroenterologist who works in private practice and has an appointment at the public Austin Hospital.

Dr McClure welcomes referrals for a broad range of gastroenterological issues including endoscopy (gastrosocopy and colonoscopy), bowel cancer screening, irritable bowel syndrome iron deficiency, gastroesophageal reflux disease, coeliac disease and liver diseases.

She obtained her medical and gastroenterological qualifications at The University of Melbourne, St Vincent's Hospital and Austin Health. Dr McClure is currently completing her PhD on novel blood tests for liver transplant patients, supported by a research scholarship.

Dr McClure is dedicated to providing compassionate, evidence-based care and prioritizes clear communication with her patients and referring clinicians. She encourages direct contact from GPs and specialists for advice and readily accommodates urgent referrals.

### **Contact Details:**

**PRACTICE ADDRESS:** Gastrointestinal Specialists, 1/18 Bell St, Heidelberg Heights. VIC. 3081

**PRACTICE PHONE:** 03 9455 2188

**PRACTICE FAX:** 03 9457 3390

**PRACTICE EMAIL:** [admin@gispecialists.com.au](mailto:admin@gispecialists.com.au)

**PRACTICE WEBSITE:** <https://gispecialists.com.au/>



**Adeney**  
PRIVATE HOSPITAL